

5511

BRASS SOLENOID VALVE

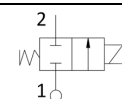


- Coil size 22mm
- 2/2 way NC - Direct acting
- Cold / high temperature fluids
- Multi purpose usage
- ED 100%

Technical data

Body material	Brass	
Seal material	EPDM – NBR - FPM	
Tube material	Brass	
Working fluids	Air, water, steam	
Electrical connect.	6,3 x 0,8 fast-on terminal	
Insulation class	H	
220-230VAC 50-60Hz Approvals: CE; VDE	Power (VA)	13,5
	Amb. T. (°C)	120
	Fluid T. (°C)	140
100-120VAC 60Hz Approvals: CE; UL	Power (VA)	14
	Amb. T. (°C)	80
	Fluid T. (°C)	145
12-24 VDC Approvals: CE	Power (W)	9
	Amb. T. (°C)	80
	Fluid T. (°C)	140

Performance



Orifice size (mm)	Flow (m3/h)	MOPD (bar)	
		AC	DC
1,5	0,065	17	8
2,0	0,090	13	7
2,5	0,150	9	2
2,7	0,160	8	2
3,0	0,175	5	1
3,3	0,190	4	1

*: For pipes and codes see drawings