

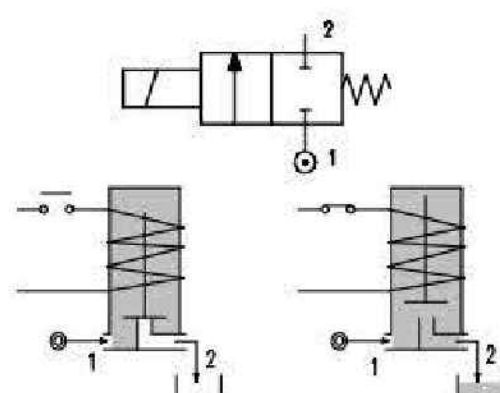
DESCRIPTION

 Solenoid valve 2 way normally closed
 direct acting poppet type

CONSTRUCTION

| | |
|------------------|----------------------------|
| Body | Brass |
| Armature tube | Stainless steel |
| Plunger and core | Stainless steel |
| Springs | Stainless steel |
| Seal material | NBR FPM EPDM PTFE |

FEATURES

 Maximum allowable pressure 80 bar *
 Maximum fluid viscosity 25cSt (mm²/s)
 Ambient temperature : with class F coil -10°C +55°C
 with class H coil -10°C +80°C
 Universal mounting position

OPTIONS : Electroless nickel plating
 For use with oxygen

| CODE ① ② | Connection G ISO 228 | Orifice mm | KV m ³ /h | Differential pressure bar | | | Nominal power | | | Coil | | Seal ① | Temp. range °C |
|--------------------|----------------------------|---------------|-------------------------|------------------------------|-----|-----|---------------|---------------|------------|--------|-------|-----------|----------------------|
| | | | | Min | Max | | AC Inrush | VA Holding | DC Watt | Series | Width | | |
| | | | | | AC | DC | | | | | | | |
| E106C....30//I.... | 3/8" | 3 | 0.25 | 0 | 15 | 10 | 20 | 15 | 10 | 2 | 30 | NBR=B | -10 +90 |
| E106C....35//I.... | | 3.5 | 0.32 | 0 | 10 | 8 | | | | | | | |
| E106C....40//I.... | | 4 | 0.36 | 0 | 8 | 5 | | | | | | | |
| E106C....45//I.... | | 4.5 | 0.41 | 0 | 6.5 | 3.5 | | | | | | | |
| E106C....52//I.... | | 5.2 | 0.47 | 0 | 4 | 1.8 | | | | | | | |
| E106C....64//I.... | | 6.4 | 0.64 | 0 | 3 | 1 | | | | | | | |
| E106D....30//I.... | 1/2" | 3 | 0.25 | 0 | 15 | 10 | 40 | 30 | 27 | 5 | 36 | EPDM=E | <+140 |
| E106D....35//I.... | | 3.5 | 0.32 | 0 | 10 | 8 | | | | | | | |
| E106D....40//I.... | | 4 | 0.36 | 0 | 8 | 5 | | | | | | | |
| E106D....45//I.... | | 4.5 | 0.41 | 0 | 6.5 | 3.5 | | | | | | | |
| E106D....52//I.... | | 5.2 | 0.47 | 0 | 4 | 1.8 | | | | | | | |
| E106D....64//I.... | | 6.4 | 0.64 | 0 | 3 | 1 | | | | | | | |
| E106C....30//I.... | 3/8" | 3 | 0.25 | 0 | 25 | 24 | 40 | 30 | 27 | 5 | 36 | FPM=V | -10 +130 |
| E106C....35//I.... | | 3.5 | 0.32 | 0 | 20 | 19 | | | | | | | |
| E106C....40//I.... | | 4 | 0.36 | 0 | 16 | 15 | | | | | | | |
| E106C....45//I.... | | 4.5 | 0.41 | 0 | 14 | 13 | | | | | | | |
| E106C....52//I.... | | 5.2 | 0.47 | 0 | 10 | 9 | | | | | | | |
| E106C....64//I.... | | 6.4 | 0.64 | 0 | 5 | 4.5 | | | | | | | |
| E106D....30//I.... | 1/2" | 3 | 0.25 | 0 | 25 | 24 | 40 | 30 | 27 | 5 | 36 | PTFE=W | -10 +160 |
| E106D....35//I.... | | 3.5 | 0.32 | 0 | 20 | 19 | | | | | | | |
| E106D....40//I.... | | 4 | 0.36 | 0 | 16 | 15 | | | | | | | |
| E106D....45//I.... | | 4.5 | 0.41 | 0 | 14 | 13 | | | | | | | |
| E106D....52//I.... | | 5.2 | 0.47 | 0 | 10 | 9 | | | | | | | |
| E106D....64//I.... | | 6.4 | 0.64 | 0 | 5 | 4.5 | | | | | | | |

① Seal Example: E106CE35//521 EPDM seal

② Coil Coil 24V DC

③ Maximum allowable leakage < 0.2 nL/h

* REMARK: The maximum allowable pressure PS for steam is 6 bar (gauge pressure) with PTFE seals and 2.5bar with EPDM seals

Repeat cycle timer for solenoid valve

Code 11303000 (output DIN 43650 A)

Code 11304000 (output DIN 46244)


FEATURES :

 Electrical connection in/out : DIN 43650 A / DIN 43650 A
 DIN 43650 A / DIN 46244

 Time scales : Time ON 0,5-10 sec
 Time OFF 0,5-45 min

(other time scales available on request)

Reset/Test by manual touch switch

ON and OFF LED indicators

Operating temperature : -10°C +50°C

ELECTRICAL CONNECTION :

Supply voltage : 24-240V AC/DC 50/60Hz

Switch capacity : 1 A

Inrush current : 10 A for 10 msec

Current consumption : 4 mA

Protection class : IP65