

6612

BRASS SOLENOID VALVE

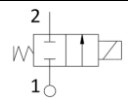


- Coil size 33mm
- 2/2 way NC - Direct acting
- Cold / high temperature fluids
- Multi purpose usage
- ED 100%

Technical data

Body material	Brass	
Seal material	EPDM – NBR - FPM	
Tube material	Brass	
Working fluids	Air, water, steam	
Electrical connect.	6,3 x 0,8 fast-on terminal	
Insulation class	H	
220-230VAC 50-60Hz Approvals: CE; VDE	Power (VA)	17
	Amb. T. (°C)	120
	Fluid T. (°C)	150
100-120VAC 60Hz Approvals: CE; UL	Power (VA)	22
	Amb. T. (°C)	80
	Fluid T. (°C)	150
12-24 VDC Approvals: CE	Power (W)	16
	Amb. T. (°C)	80
	Fluid T. (°C)	150

Performance



Orifice size * (mm)	Flow (m3/h)	MOPD (bar)	
		AC	DC
2,0	0,085	25	12
3,0	0,170	9	5
4,0	0,390	6	4

*: For pipes and codes see drawings